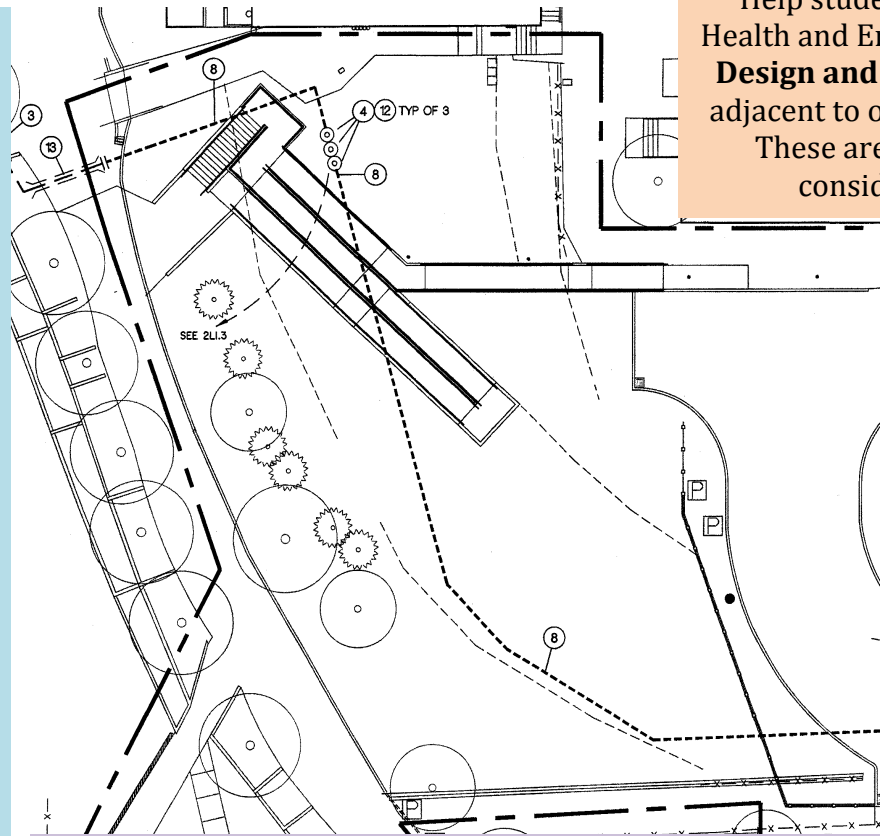


Help Design University High School's Food Forest that will be planted Sunday April 22nd.

Herbs & Medicinal Plant Guide

Andrographis	Sage, Garden
Angelica	Self-Heal
Arnica chamissonis	Skullcap
Aster, Purple	Southernwood
Astragalus	Spikenard, California
Ashitaba	Stoneroot
Blue Flag* (Iris versicolor)	Tarragon, Mexican
Blue Flowered Borage	Tumeric
Black Cohosh	Valerian, Indian
Black-eyed Susan	Vervain, Blue
Boneset	Quaternata
Bowman's Root	Wintergreen
Brahmi	Witch Hazel
Bugle	Wood Betony
Bugleweed, American	Yarrow, Official
Burning Bush	Alum Root
Butterbur	Lavendar
Camas, Blue	Lemon Balm
Celandine	Mint/ Spearmint
Chameleon	Rosemary
Codonopsis	Thyme
Comfrey, Russian	Terragon
Comfrey, True	Chammomile
Cramp Bark	Garlic
Creeping Blueberry	Ginger
Datura, Moonflower	Hibiscus
Evening Primrose	Psyllium
Foxglove, Grecian	Lemon Persulane
Leopard Flower	Echinacea
Life Plant	Calnedula (marigolds)
Madder	Muellein
Marshmallow	Yerba Santa
Nettle, Stinging	Hairy Vetch
Oca, Mixed Colors	Clover
Oregano, Greek	Fava beans
Penstemon, Large-flower	

Help students in the School of Health and Environmental Sciences **Design and Plant a Food Forest** adjacent to our raised bed garden. These are the plants we are considering planting.



Tree Guide

1. Bacon B Avocado
2. Fuerte B Avocado
3. Hass A Avocado
4. Pinkerton A Avocado
5. Reed A Avocado
6. Blenheim Apricot
7. Goldkist Apricot
8. Panamint Nectarine
9. Bearss Lime
10. Eureka Lemon
11. Improved Myer Lemon
12. Tango Mandarin
13. Gold Nugget Mandarin
14. Tropic Snow White Peach
15. Santa Rosa Plum
16. Cherimoya Loquat (2)
17. Ice Cream Banana (2)
18. Raja Puri Banana (2)
19. Mysore Banana (2)
20. Washington Navel Orange (2)
21. Valencia Orange (2)
22. Fuji Apple (2)
23. Gala Apple (2)
24. Asian Pear
25. Persimmon
26. Fig (4)
27. Almond
28. Walnut
29. Pecan

Perennial Fruits & Vegetables

Berries

- Raspberry Bush (10)
- Blueberry Bush
- Asparagus
- Purple Hardy Kiwi (2)
- Hardy Kiwi (2)
- Ground Nut
- Jinenjo Yam & Wild Yam
- Yacon
- Artichoke, Jerusalem Red
- Amarath. Buckwheat



8' 4' 0" 16' 32'
/ ORIGINAL SCALE 1" = 16'-0"